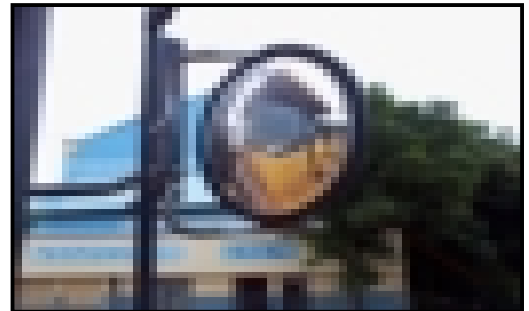


BLIND SPOT MIRROR

As Dumpers are very big in size, the operator is unable to see the front lower side of the dumper & this causes accidents. In order to avoid such accidents and for better and sharp view, D. G. M. S. recommends to install at least two Blind Spot Mirrors on operator's both side – Left & Right along with Rear View Mirrors.



Blind Spot Mirror is round in shape & of 11" Dia & Depth is not more than 2" for better and clear view. It is useful to see front bottom side of the dumper as well as front tyre also.



Technical Details of Blind Spot Mirror

- It is made by unbreakable* material.
- It's shape is convex for clear view.
- It has better clarity than Glass mirror.
- It is adjustable in any direction – Left , Right , Up or Down for better view.
- It is light weight for easy mounting.

